

30'

2,350 Square Feet

The **ASHBURY**



ELEVATION A

The **ASHBURY**

2,350 Square Feet



ELEVATION B

The **ASHBURY**

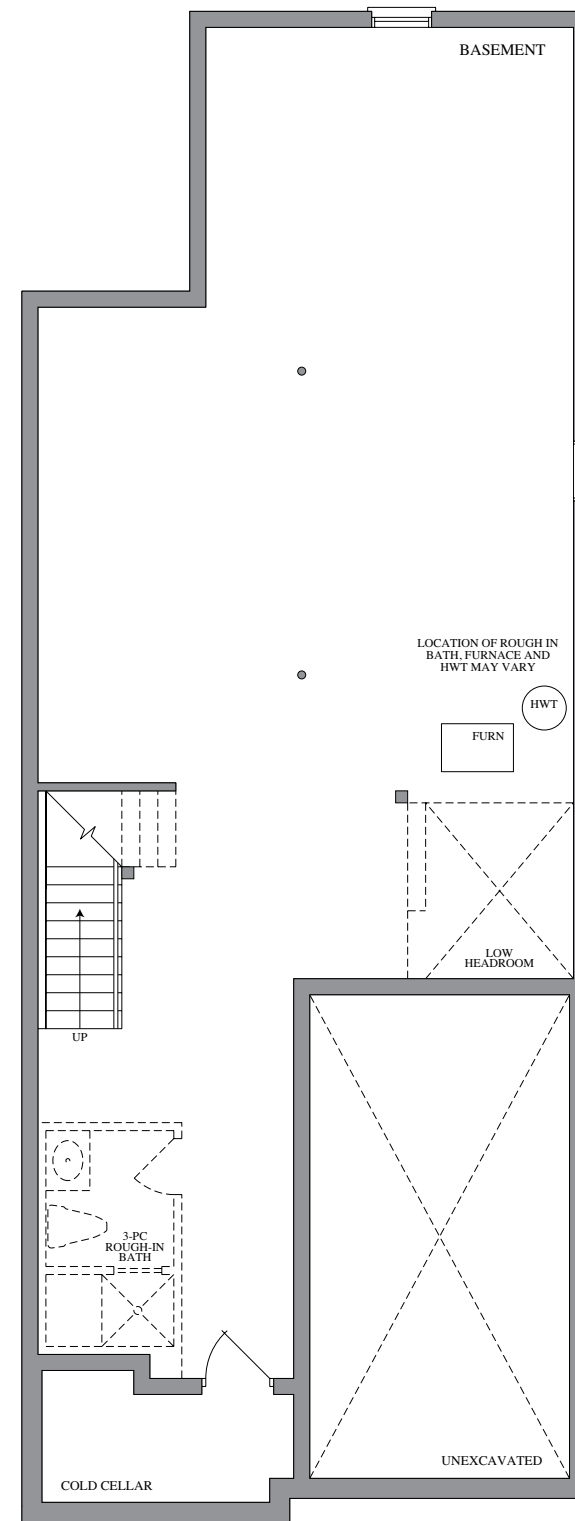
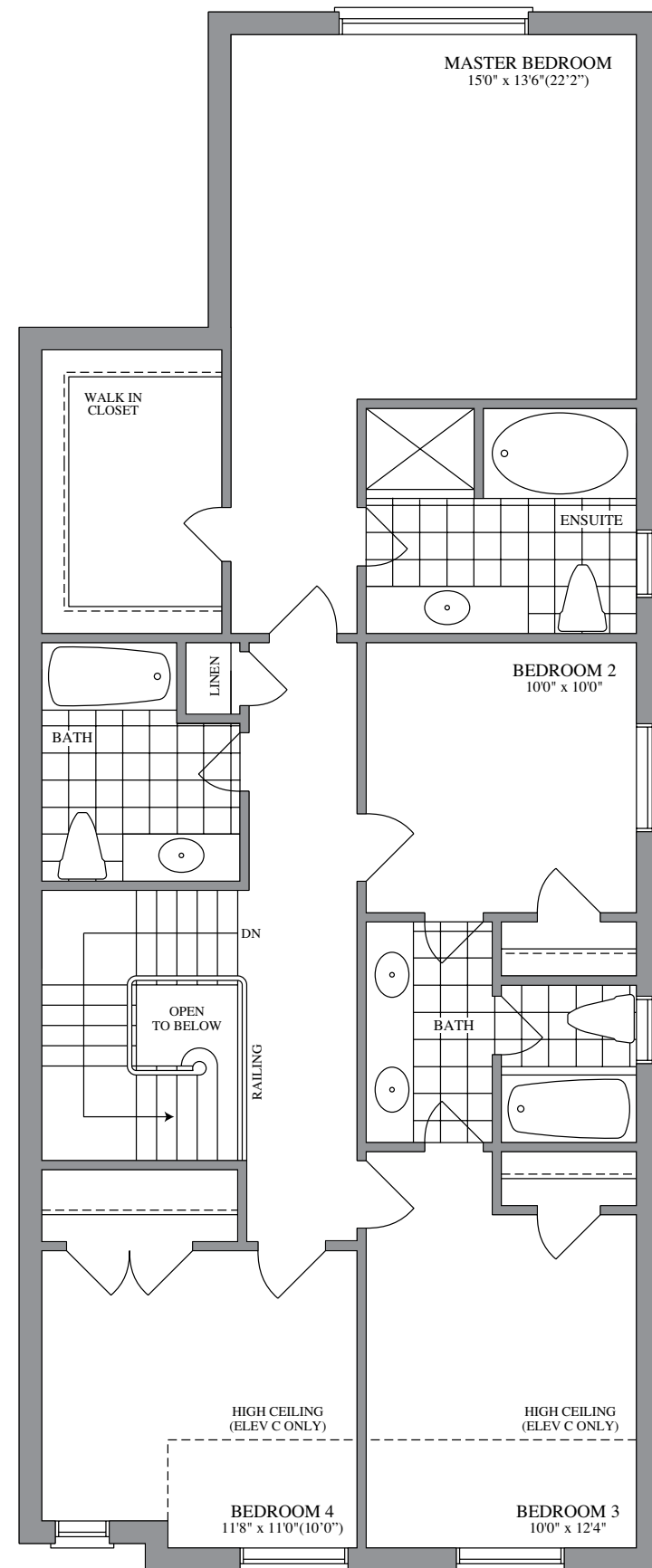
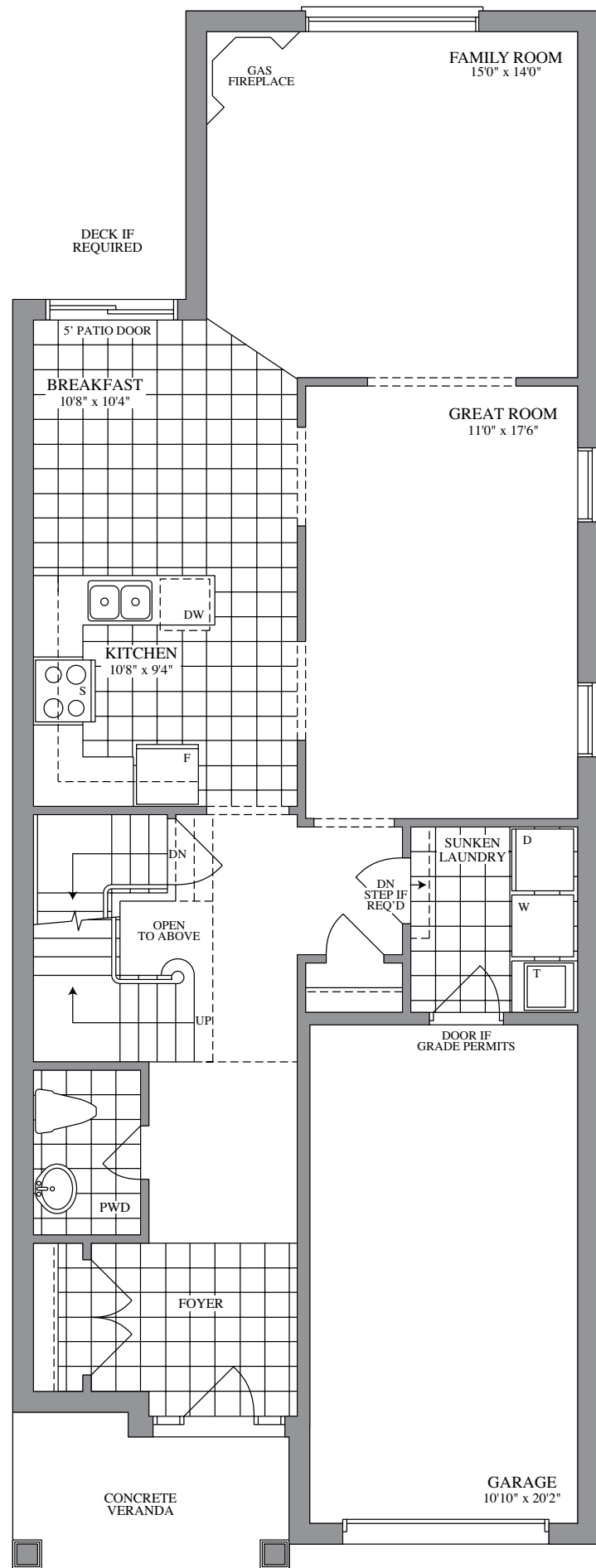
2,350 Square Feet



ELEVATION C



Plans and specifications are subject to change without notice. E. & O. E. Actual usable flo or space may vary from the stated floor area. All renderings are artist's concept.



30'

The ASHBURY



ELEVATION A ▲ 2,350 SQ. FT.



ELEVATION B ▲ 2,350 SQ. FT.



ELEVATION C ▲ 2,350 SQ. FT.



Plans and specifications are subject to change without notice. E. & O. E. Actual usable floor space may vary from the stated floor area. All renderings are artist's concept.